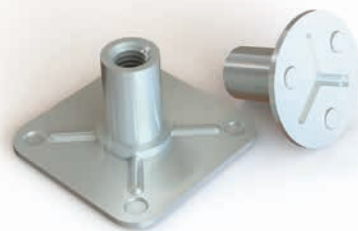


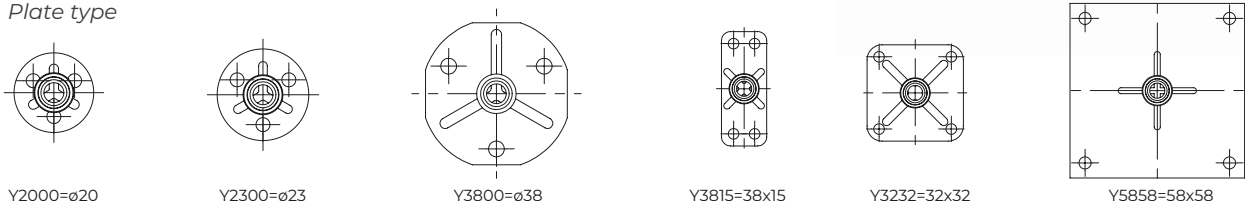
STEP 1 **BRCY** SERIES

Threaded bush with blind plate and round spacers



STEP 2 Bush height (L) 5 - 10 - 12 - 15 - 20 - 22 - 25

STEP 3 Plate type

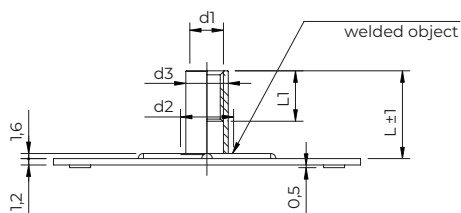


STEP 4 Thread (M) M4 - M5 - M6 - M8 - M10
Tolerance 6H

STEP 5 Material Zinc Plated Steel .12
Electropolished 316 Stainless Steel .56

CODE	d1 Thread	d2	d3	CODE	d1 Thread	d2	d3
BRC_Y2000040._	M 4	12	8,3	BRC_Y3815040._	M 4	12	8,3
BRC_Y2300040._				BRC_Y3232040._			
BRC_Y3800040._				BRC_Y5858040._			
BRC_Y2000050._	M 5	13	9,6	BRC_Y3815050._	M 5	13	9,6
BRC_Y2300050._				BRC_Y3232050._			
BRC_Y3800050._				BRC_Y5858050._			
BRC_Y2000060._	M 6	13	9,6	BRC_Y3815060._	M 6	13	9,6
BRC_Y2300060._				BRC_Y3232060._			
BRC_Y3800060._				BRC_Y5858060._			
BRC_Y2000080._	M 8	15	11,0	BRC_Y3815080._	M 8	15	11,0
BRC_Y2300080._				BRC_Y3232080._			
BRC_Y3800080._				BRC_Y5858080._			
BRC_Y2000100._	M 10	16	12,6	BRC_Y3815100._	M 10	16	12,6
BRC_Y2300100._				BRC_Y3232100._			
BRC_Y3800100._				BRC_Y5858100._			

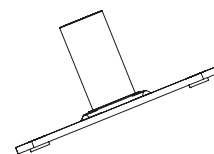
NB Threaded length: 3 times ø (max.)
Non binding dimensions, expressed in mm.



BRC 12 Y3815 050. 12

STEP 1 **STEP 2** **STEP 3** **STEP 4** **STEP 5**

Example of code designation: Threaded bush with Y3815 rectangular blind plate, M5 thread, 12mm length, zinc-plated steel



BRC12Y3815050.12

WARNING: for more information regarding product availability and feasibility, please contact the tech/sales office.

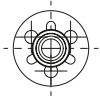
STEP 1 **BRPY**

SERIES

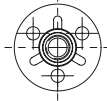
Threaded bush with through-hole plate and round spacers

STEP 2 Bush height (L) 5 - 10 - 12 - 15 - 20 - 22 - 25

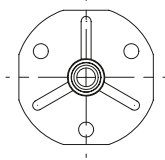
STEP 3 Plate type



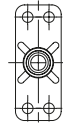
Y2000=ø20



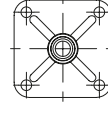
Y2300=ø23



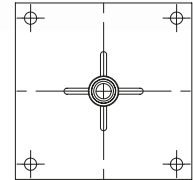
Y3800=ø38



Y3815=38x15



Y3232=32x32



Y5858=58x58

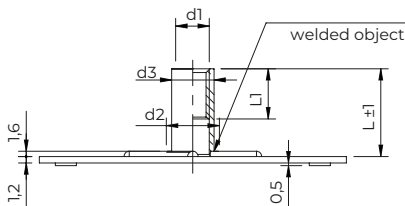
STEP 4 Thread (M) M4 - M5 - M6 - M8 - M10
Tolerance 6H

STEP 5 Material Zinc Plated Steel .12
Electropolished 316 Stainless Steel .56

CODE	d1 Thread	d2	d3
BRP_Y2000040._			
BRP_Y2300040._	M 4	12	8,3
BRP_Y3800040._			
BRP_Y2000050._			
BRP_Y2300050._	M 5	13	9,6
BRP_Y3800050._			
BRP_Y2000060._			
BRP_Y2300060._	M 6	13	9,6
BRP_Y3800060._			
BRP_Y2300080._	M 8	15	11,0
BRP_Y3800080._			
BRP_Y3800100._	M 10	16	12,6

CODE	d1 Thread	d2	d3
BRP_Y3815040._			
BRP_Y3232040._	M 4	12	8,3
BRP_Y5858040._			
BRP_Y3815050._			
BRP_Y3232050._	M 5	13	9,6
BRP_Y5858050._			
BRP_Y3815060._			
BRP_Y3232060._	M 6	13	9,6
BRP_Y5858060._			
BRP_Y3815080._			
BRP_Y3232080._	M 8	15	11,0
BRP_Y5858080._			
BRP_Y3232100._	M 10	16	12,6
BRP_Y5858100._			

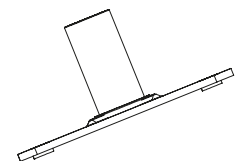
NB Threaded length: 3 times ø (max.)
Non binding dimensions, expressed in mm.



BRP 12 Y3815 050. 12

STEP 1 STEP 2 STEP 3 STEP 4 STEP 5

Example of code designation: Threaded bush with Y3815 rectangular through-hole plate, M5 thread, 12mm length, zinc-plated steel



BRP12Y3815050.12

WARNING: for more information regarding product availability and feasibility, please contact the tech/sales office.