

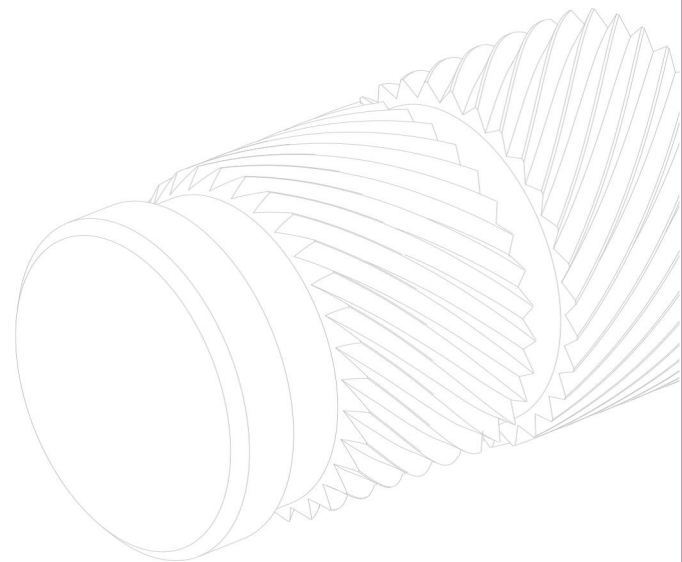
SERIES 62_/C



SERIES 62_/C

PRODUCT		CODE	Metric thread	External diameter	Head diameter	Head thickness	Anchorage dimension	Hole diameter	Minimum wall thickness
S**	R***		(d1)	(d2)	(d4)	(L2)	(L1)	(d3)	(S)
	●	623/C	M 3	4.6	5.6	0.6	8.8	4.0	2.3
	●	624/C	M 4	6.3	7.2	0.8	12.2	5.6	2.5
	●	625/C	M 5	7.0	8.0	1.0	15	6.4	2.7
	●	626/C	M 6	8.6	9.5	1.3	15	8.0	3.0
	●	628/C	M 8	10.2	11.0	1.3	15	9.6	3.5

S** standard	R*** on demand
-----------------	-------------------



- **MATERIAL**

Brass

- **FINISHING**

Natural

- **TOLERANCES**

ISO 2768-m

- **THREADING d1**

ISO 6H

- **EXAMPLE OF CODE DESIGNATION**

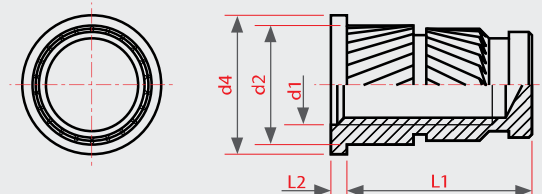
Closed insert S-Lok® with head, M 5 thread, brass: 625/C

Non binding dimensions, expressed in mm.

For a correct usage of the product it is advisable to carry out some preliminary assembling tests to determine the correct hole diameter.

Tél France: +33-9.75.18.16.09
 Tel BeNeLux: +32-9/395.95.90
 Adresse mail:
 co@junoindustries.fr
 co@junoindustries.eu

Juno Industries
 Stoktevijver 22
 9930 Lievegem
 Belgique
 www.junoindustries.fr



SERIES 62_/C