

SERIES 60_/C

BLIND THREADED INSERTS

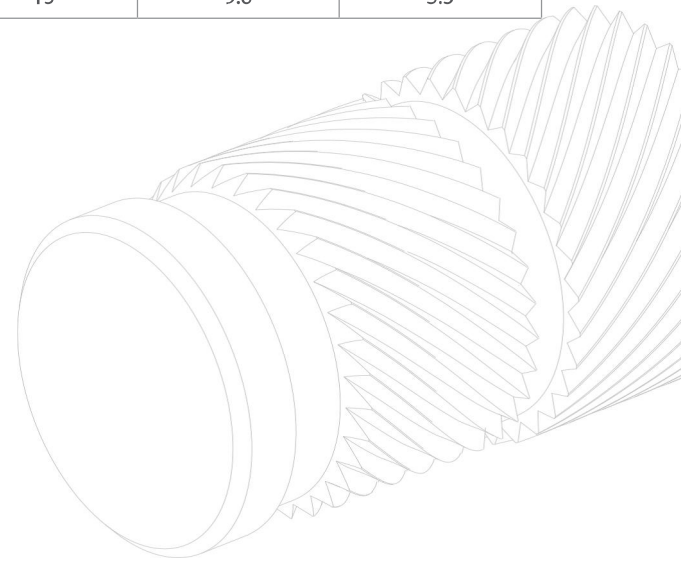
APPLICATION	ASSEMBLY
Thermoplastic materials.	Ultrasonic, heat, overmoulding.
Thermosetting materials.	Overmoulding.



SERIES 60_/C

PRODUCT		CODE	Metric thread	External diameter	Total length	Hole diameter	Minimum wall thickness
S**	R***		(d1)	(d2)	(L)	(d3)	(S)
●		603/C	M 3	4.6	8.8	4.0	2.3
●		604/C	M 4	6.3	12.2	5.6	2.5
●		605/C	M 5	7.0	15	6.4	2.7
●		606/C	M 6	8.6	15	8.0	3.0
●		608/C	M 8	10.2	15	9.6	3.5

S** standard	R*** on demand
-----------------	-------------------



Brass

- **FINISHING**

Natural

- **TOLERANCES**

ISO 2768-m

- **THREADING d1**

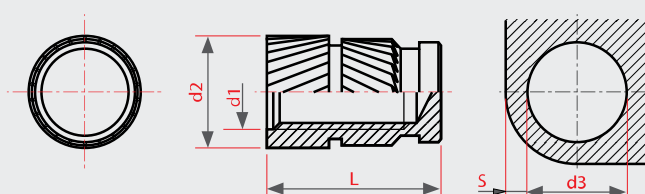
ISO 6H

- **EXAMPLE OF CODE DESIGNATION**

 Closed insert S-Lok® with head, M 5 thread, brass: **625/C**

Non binding dimensions, expressed in mm.

For a correct usage of the product it is advisable to carry out some preliminary assembling tests to determine the correct hole diameter



SERIES 60_/C

Tél France: +33-9.75.18.16.09
Tel BeNeLux: +32-9/395.95.90
Adresse mail:
co@junoindustries.fr
co@junoindustries.eu
Juno Industries
Stoktevijver 22
9930 Lievegem
Belgique
www.junoindustries.fr