

# Deform-Nut®

## SERIE 9201 • 9201-Z

S E R I E S



### THREADED TUBULAR RIVET NUTS WITH ROUND HEAD

| APPLICATION   |
|---|
| On boxed and tubular sections, metal sheets, other materials. |
| ASSEMBLY  |
| By specific manual and pneumatic tools.                       |

Ref. UNI 9201 standard

| CODE         | Grip range     | Total length | Metrical thread | Shaft Ø | Head Ø | Head thicknesses | Hole Ø             | Rear length |
|--------------|----------------|--------------|-----------------|---------|--------|------------------|--------------------|-------------|
|              | (S)            | (l)          | (d1)<br>6H      | (d)     | (d3)   | (l1)             | (d5)<br>+0,15<br>0 | (l2)<br>*   |
| 9201A/M 3/_  | 9201A/M 3/_Z_  | 0,5 ÷ 2,0    | M 3             | 5       | 8      | 0,8              | 5                  | 6           |
| 9201B/M 3/_  | 9201B/M 3/_Z_  | 2,0 ÷ 3,5    |                 |         |        |                  |                    |             |
| 9201A/M 4/_  | 9201A/M 4/_Z_  | 0,5 ÷ 2,0    | M 4             | 6       | 9      | 0,8              | 6                  | 6,5         |
| 9201B/M 4/_  | 9201B/M 4/_Z_  | 2,0 ÷ 4,0    |                 |         |        |                  |                    |             |
| 9201A/M 5/_  | 9201A/M 5/_Z_  | 0,5 ÷ 2,5    | M 5             | 7       | 10     | 1                | 7                  | 7           |
| 9201B/M 5/_  | 9201B/M 5/_Z_  | 2,5 ÷ 4,5    |                 |         |        |                  |                    |             |
| 9201A/M 6/_  | 9201A/M 6/_Z_  | 0,5 ÷ 3,0    | M 6             | 9       | 12     | 1,2              | 9                  | 9,5         |
| 9201B/M 6/_  | 9201B/M 6/_Z_  | 3,0 ÷ 5,5    |                 |         |        |                  |                    |             |
| 9201A/M 8/_  | 9201A/M 8/_Z_  | 0,5 ÷ 3,5    | M 8             | 11      | 14     | 1,3              | 11                 | 9,5         |
| 9201B/M 8/_  | 9201B/M 8/_Z_  | 3,5 ÷ 6,0    |                 |         |        |                  |                    |             |
| 9201A/M 10/_ | 9201A/M 10/_Z_ | 0,5 ÷ 3,5    | M 10            | 13      | 16     | 1,5              | 13                 | 12,5        |
| 9201B/M 10/_ | 9201B/M 10/_Z_ | 3,5 ÷ 6,0    |                 |         |        |                  |                    |             |
| 9201A/M 12/_ | 9201A/M 12/_Z_ | 0,5 ÷ 3,5    | M 12            | 15**    | 18     | 2                | 15                 | 16          |
| 9201B/M 12/_ | 9201B/M 12/_Z_ | 3,5 ÷ 6,5    |                 |         |        |                  |                    |             |

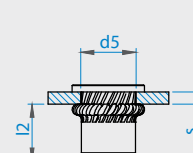
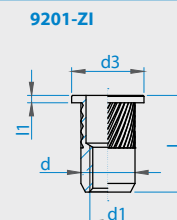
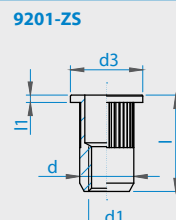
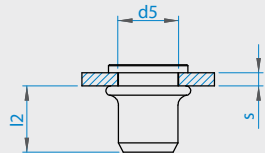
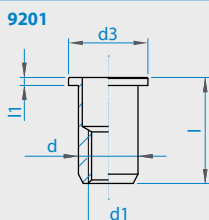
\* Dimensions measured on average thicknesses. Variable according to s dimension.

\*\*For the version with shaft diameter 16 refer to TC-TL pag 10

| SERIES 9201 (plain)   |
|---|
| MATERIAL  |
| Steel nr. 1.0718 /8   |
| Steel nr. 1.0303 (excluding thread M3 and M12) /8S  |
| Stainless steel nr. 1.4305 /X   |
| Stainless steel nr. 1.4567 (excluding thread M3 and M12) /XS  |
| SURFACE TREATMENT   |
| Steel rivet nuts: white zinc plating  |
| Stainless steel rivet nuts: natural state   |
| THREAD TOLERANCE  |
| Metrical tolerance ISO 6H   |
| EXAMPLE OF CODE DESIGNATION   |
| Threaded tubular rivet nut with round head, grip thicknesses 2,0mm, M 6 thread, stainless steel material: 9201A/M 6/X |

| SERIES 9201-Z (knurled)  |
|--|
| MATERIAL   |
| Steel nr. 1.0718 /8Z1  |
| Steel nr. 1.0303 (excluding thread M3, M10 and M12) /8ZS   |
| Stainless steel nr. 1.0718 /XZ1  |
| SURFACE TREATMENT  |
| Steel rivet nuts: white zinc plating   |
| Stainless steel rivet nuts: natural state  |
| THREAD TOLERANCE   |
| Metrical tolerance ISO 6H  |
| EXAMPLE OF CODE DESIGNATION  |
| Threaded tubular rivet nut with round head and knurled body, grip thicknesses 2,0mm, thread size M6, stainless steel material: 9201A/M 6/XZ1 |
| For the versions B the knurling part might be detached from the head.  |

Juno Industries BVBA - Stoktevijver 22 - 9930 Zomergem/België/Belgique  
 Tel/tél: (0)9/395.95.90 - Fax: (0)9/395.95.91 - co@junoindustries.eu



# Deform-Nut®

## SERIE 9204 • 9204-ZI

S E R I E S

THREADED TUBULAR CLOSED END RIVET NUTS WITH ROUND HEAD

### APPLICATION

On boxed and tubular sections, metal sheets, other materials.

### ASSEMBLY

By specific manual and pneumatic tools.



Ref. UNI 9204 standard

| CODE         |                 | Grip range | Total lenght | Metrical thread | Shaft Ø | Head Ø | Head thicknesses | Hole Ø             | Rear lenght |
|--------------|-----------------|------------|--------------|-----------------|---------|--------|------------------|--------------------|-------------|
|              |                 | (s)        | (l)          | (d1)<br>6H      | (d)     | (d3)   | (l1)             | (d5)<br>+0,15<br>0 | (l2)<br>*   |
| 9204A/M 3/_  | 9204A/M 3/_ ZI  | 0,5 ÷ 2,0  | 13           | M 3             | 5       | 8      | 0,8              | 5                  | 9,5         |
| 9204B/M 3/_  | 9204B/M 3/_ ZI  | 2,0 ÷ 3,5  | 14,5         |                 |         |        |                  |                    |             |
| 9204A/M 4/_  | 9204A/M 4/_ ZI  | 0,5 ÷ 2,0  | 15           | M 4             | 6       | 9      | 0,8              | 6                  | 11          |
| 9204B/M 4/_  | 9204B/M 4/_ ZI  | 2,0 ÷ 4,0  | 17           |                 |         |        |                  |                    |             |
| 9204A/M 5/_  | 9204A/M 5/_ ZI  | 0,5 ÷ 2,5  | 18           | M 5             | 7       | 10     | 1                | 7                  | 12,5        |
| 9204B/M 5/_  | 9204B/M 5/_ ZI  | 2,5 ÷ 4,5  | 20           |                 |         |        |                  |                    |             |
| 9204A/M 6/_  | 9204A/M 6/_ ZI  | 0,5 ÷ 3,0  | 22,5         | M 6             | 9       | 12     | 1,2              | 9                  | 16          |
| 9204B/M 6/_  | 9204B/M 6/_ ZI  | 3,0 ÷ 5,5  | 25           |                 |         |        |                  |                    |             |
| 9204A/M 8/_  | 9204A/M 8/_ ZI  | 0,5 ÷ 3,5  | 25           | M 8             | 11      | 14     | 1,3              | 11                 | 17,5        |
| 9204B/M 8/_  | 9204B/M 8/_ ZI  | 3,5 ÷ 6,0  | 27,5         |                 |         |        |                  |                    |             |
| 9204A/M 10/_ | 9204A/M 10/_ ZI | 0,5 ÷ 3,5  | 30           | M 10            | 13      | 16     | 1,5              | 13                 | 21,5        |
| 9204B/M 10/_ | 9204B/M 10/_ ZI | 3,5 ÷ 6,0  | 32,5         |                 |         |        |                  |                    |             |
| 9204A/M 12/_ | 9204A/M 12/_ ZI | 0,5 ÷ 3,5  | 36,5         | M 12            | 15**    | 18     | 2                | 15                 | 27,5        |
| 9204B/M 12/_ | 9204B/M 12/_ ZI | 3,5 ÷ 6,5  | 39,5         |                 |         |        |                  |                    |             |

\* Dimensions measured on average thicknesses. Variable according to s dimension.

\*\*For the version with shaft diameter 16 refer to TGT/TL/CH pag 11

### SERIES 9204 (plain)

#### MATERIAL

Steel nr. 1.0718 (on demand) \_\_\_\_\_ / \_\_\_\_ /8

Steel nr. 1.0303 (excluding thread M3 and M12) \_\_\_\_\_ / \_\_\_\_ /8S

Stainless steel nr. 1.4305 (on demand) \_\_\_\_\_ / \_\_\_\_ /X

Stainless steel nr. 1.4567 (excluding thread M3 and M12) \_\_\_\_\_ / \_\_\_\_ /XS

#### SURFACE TREATMENT

Steel rivet nuts: white zinc plating

Stainless steel rivet nuts: natural state

#### THREAD TOLERANCE

Metrical tolerance ISO 6H

#### EXAMPLE OF CODE DESIGNATION

Threaded tubular closed end rivet nuts with round head, grip thicknesses 2,0 mm, M 6 thread, stainless steel: 9204A/M6/X

### SERIES 9204-ZI (knurled)

#### MATERIAL

Steel nr. 1.0718 (excluding thread M12) \_\_\_\_\_ / \_\_\_\_ /8ZI

Stainless steel nr. 1.0718 (excluding thread M12) \_\_\_\_\_ / \_\_\_\_ /XZI

#### SURFACE TREATMENT

Steel rivet nuts: white zinc plating

Stainless steel rivet nuts: natural state

#### THREAD TOLERANCE

Metrical tolerance ISO 6H

#### EXAMPLE OF CODE DESIGNATION

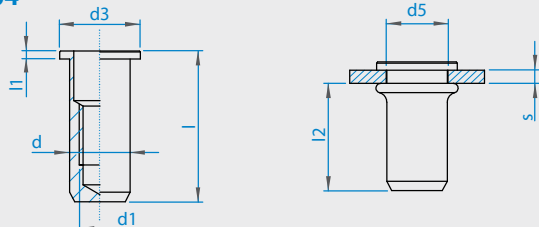
Non binding dimensions, expressed in mm.

Threaded tubular closed end rivet nuts with round head and knurled body, grip thicknesses 2,0 mm, M 6 thread, stainless steel: 9204A/M6/XZI

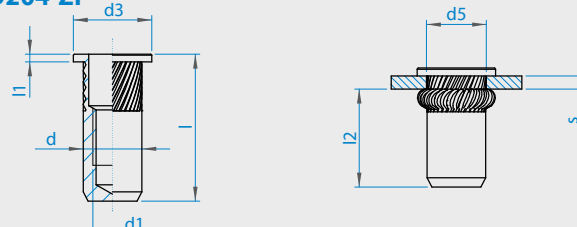
For the versions B the knurling part might be detached from the head.

Juno Industries BVBA - Stoktevijver 22 - 9930 Zomergem/België/Belgique  
Tel/tél: (0)9/395.95.90 - Fax: (0)9/395.95.91 - co@junindustries.eu

### 9204



### 9204-ZI



# Deform-Nut®

## SERIE 9203 • 9203-Z

S E R I E S

THREADED TUBULAR RIVET NUTS WITH LOW PROFILE HEAD

| APPLICATION   |
|---|
| On boxed and tubular sections, metal sheets, other materials. |
| ASSEMBLY  |
| By specific manual and pneumatic tools.                       |



Ref. UNI 9203 standard

| CODE                |                       | Grip range | Total lenght | Metrical thread | Shaft Ø | Head Ø | Head thickness | Hole Ø             | Rear lenght |
|---------------------|-----------------------|------------|--------------|-----------------|---------|--------|----------------|--------------------|-------------|
|                     |                       | (s)        | (l)          | (d1)<br>6H      | (d)     | (d3)   | (l1)<br>~      | (d5)<br>+0,15<br>0 | (l2)<br>*   |
| <b>9203A/M 3/_</b>  | <b>9203A/M 3/_Z_</b>  | 0,5 ÷ 2,0  | 9            | M 3             | 5       | 5,5    | 0,35           | 5                  | 6           |
| <b>9203B/M 3/_</b>  | <b>9203B/M 3/_Z_</b>  | 2,0 ÷ 3,5  | 10,5         |                 |         |        |                |                    |             |
| <b>9203A/M 4/_</b>  | <b>9203A/M 4/_Z_</b>  | 0,5 ÷ 2,0  | 10           | M 4             | 6       | 6,75   | 0,5            | 6                  | 6,5         |
| <b>9203B/M 4/_</b>  | <b>9203B/M 4/_Z_</b>  | 2,0 ÷ 4,0  | 12           |                 |         |        |                |                    |             |
| <b>9203A/M 5/_</b>  | <b>9203A/M 5/_Z_</b>  | 0,5 ÷ 2,5  | 12           | M 5             | 7       | 8      | 0,6            | 7                  | 7           |
| <b>9203B/M 5/_</b>  | <b>9203B/M 5/_Z_</b>  | 2,5 ÷ 4,5  | 14           |                 |         |        |                |                    |             |
| <b>9203A/M 6/_</b>  | <b>9203A/M 6/_Z_</b>  | 0,5 ÷ 3,0  | 15           | M 6             | 9       | 10     | 0,6            | 9                  | 9,5         |
| <b>9203B/M 6/_</b>  | <b>9203B/M 6/_Z_</b>  | 3,0 ÷ 5,5  | 17,5         |                 |         |        |                |                    |             |
| <b>9203A/M 8/_</b>  | <b>9203A/M 8/_Z_</b>  | 0,5 ÷ 3,5  | 16           | M 8             | 11      | 12     | 0,6            | 11                 | 9,5         |
| <b>9203B/M 8/_</b>  | <b>9203B/M 8/_Z_</b>  | 3,5 ÷ 6,0  | 18,5         |                 |         |        |                |                    |             |
| <b>9203A/M 10/_</b> | <b>9203A/M 10/_Z_</b> | 0,5 ÷ 3,5  | 20           | M 10            | 13      | 14,5   | 0,85           | 13                 | 12,5        |
| <b>9203B/M 10/_</b> | <b>9203B/M 10/_Z_</b> | 3,5 ÷ 6,0  | 22,5         |                 |         |        |                |                    |             |
| <b>9203A/M 12/_</b> | <b>9203A/M 12/_Z_</b> | 0,5 ÷ 3,5  | 23           | M 12            | 15**    | 16,5   | 0,85           | 15                 | 16          |
| <b>9203B/M 12/_</b> | <b>9203B/M 12/_Z_</b> | 3,5 ÷ 6,5  | 26           |                 |         |        |                |                    |             |

\* Dimensions measured on average thicknesses. Variable according to s dimension.  
 \*\*For the version with shaft diameter 16 refer to TFM M12 pag 16

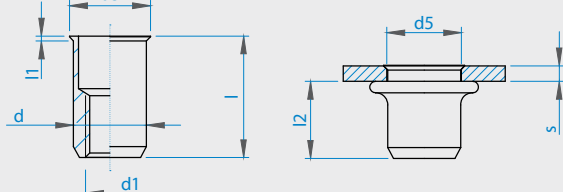
| SERIES 9203 (plain)  |
|--|
| MATERIAL   |
| Steel nr. 1.0718 (on demand) _____ / ____ /8   |
| Steel nr. 1.0303 (excluding thread M12) _____ / ____ /8S   |
| Stainless steel nr. 1.4305 _____ / ____ /X   |
| Stainless steel nr. 1.4567 (excluding thread M3 and M12) _____ / ____ /XS  |
| SURFACE TREATMENT  |
| Steel rivet nuts: white zinc plating   |
| Stainless steel rivet nuts: natural state  |
| THREAD TOLERANCE   |
| Metrical tolerance ISO 6H  |
| EXAMPLE OF CODE DESIGNATION  |
| Threaded tubular rivet nuts with low profile head, grip thicknesses 2,0 mm, M6 thread, stainless steel: <b>9203A/M 6/X</b> |

| SERIES 9203-Z (knurled)   |
|---|
| MATERIAL  |
| Steel nr. 1.0718 _____ / ____ /8Z1  |
| Steel nr. 1.0303 (excluding thread M3, M10 and M12) _____ / ____ /8ZS   |
| Stainless steel nr. 1.4305 _____ / ____ /XZ1  |
| SURFACE TREATMENT   |
| Steel rivet nuts: white zinc plating  |
| Stainless steel rivet nuts: natural state   |
| THREAD TOLERANCE  |
| Metrical tolerance ISO 6H   |
| EXAMPLE OF CODE DESIGNATION   |
| Threaded tubular rivet nuts with low profile head and knurled body, grip thicknesses 2,0 mm, M6 thread, stainless steel: <b>9203A/M 6/XZ1</b> |

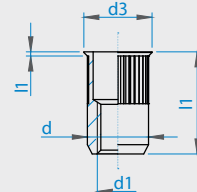
For the versions B the knurling part might be detached from the head.

**Juno Industries BVBA - Stoktevijver 22 - 9930 Zomergem/België/Belgique**  
 Tel/tél: (0)9/395.95.90 - Fax: (0)9/395.95.91 - co@junoindustries.eu

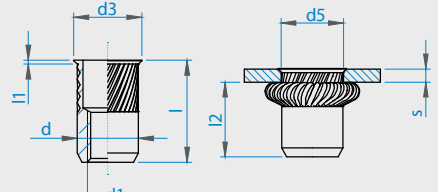
### 9203



### 9203-ZS



### 9203-ZI



# Deform-Nut®

## SERIE 9206 • 9206-ZI

S E R I E S

THREADED TUBULAR CLOSED END RIVET NUTS WITH LOW PROFILE HEAD

| APPLICATION   |
|---|
| On boxed and tubular sections, metal sheets, other materials. |
| ASSEMBLY  |
| By specific manual and pneumatic tools.                       |



Ref. UNI 9206 standard

| CODE         |                | Grip range | Total length | Metrical thread | Shaft Ø | Head Ø | Head thicknesses | Hole Ø             | Rear length |
|--------------|----------------|------------|--------------|-----------------|---------|--------|------------------|--------------------|-------------|
|              |                | (s)        | (l)          | (d1)<br>6H      | (d)     | (d3)   | (l1)<br>~        | (d5)<br>+0,15<br>0 | (l2)<br>*   |
| 9206A/M 3/_  | 9206A/M 3/_ZI  | 0,5 ÷ 2,0  | 12,5         | M 3             | 5       | 5,5    | 0,35             | 5                  | 9,5         |
| 9206B/M 3/_  | 9206B/M 3/_ZI  | 2,0 ÷ 3,5  | 14           |                 |         |        |                  |                    |             |
| 9206A/M 4/_  | 9206A/M 4/_ZI  | 0,5 ÷ 2,0  | 14,5         | M 4             | 6       | 6,75   | 0,5              | 6                  | 11          |
| 9206B/M 4/_  | 9206B/M 4/_ZI  | 2,0 ÷ 4,0  | 16,5         |                 |         |        |                  |                    |             |
| 9206A/M 5/_  | 9206A/M 5/_ZI  | 0,5 ÷ 2,5  | 17,5         | M 5             | 7       | 8      | 0,6              | 7                  | 12,5        |
| 9206B/M 5/_  | 9206B/M 5/_ZI  | 2,5 ÷ 4,5  | 19,5         |                 |         |        |                  |                    |             |
| 9206A/M 6/_  | 9206A/M 6/_ZI  | 0,5 ÷ 3,0  | 21,5         | M 6             | 9       | 10     | 0,6              | 9                  | 16          |
| 9206B/M 6/_  | 9206B/M 6/_ZI  | 3,0 ÷ 5,5  | 24           |                 |         |        |                  |                    |             |
| 9206A/M 8/_  | 9206A/M 8/_ZI  | 0,5 ÷ 3,5  | 24           | M 8             | 11      | 12     | 0,6              | 11                 | 17,5        |
| 9206B/M 8/_  | 9206B/M 8/_ZI  | 3,5 ÷ 6,0  | 26,5         |                 |         |        |                  |                    |             |
| 9206A/M 10/_ | 9206A/M 10/_ZI | 0,5 ÷ 3,5  | 29           | M 10            | 13      | 14,5   | 0,85             | 13                 | 21,5        |
| 9206B/M 10/_ | 9206B/M 10/_ZI | 3,5 ÷ 6,0  | 31,5         |                 |         |        |                  |                    |             |
| 9206A/M 12/_ | 9206A/M 12/_ZI | 0,5 ÷ 3,5  | 34,5         | M 12            | 15**    | 16,5   | 0,85             | 15                 | 27,5        |
| 9206B/M 12/_ | 9206B/M 12/_ZI | 3,5 ÷ 6,5  | 37,5         |                 |         |        |                  |                    |             |

\* Dimensions measured on average thicknesses. Variable according to s dimension.

\*\*For the version with shaft diameter 16 refer to TFM/CH M12 pag 16

| SERIES 9206 (plain)  |
|--|
| MATERIAL   |
| Steel nr. 1.0718 (on demand) _____ / ____ /8                                   |
| Steel nr. 1.0303 (on demand M3 thread - excluding thread M12) _____ / ____ /8S |
| Stainless steel nr. 1.4305 (on demand) _____ / ____ /X                         |
| Stainless steel nr. 1.4567 (excluding thread M3 and M12) _____ / ____ /XS      |
| SURFACE TREATMENT  |
| Steel rivet nuts: white zinc plating   |
| Stainless steel rivet nuts: natural state                                      |
| THREAD TOLERANCE   |
| Metrical tolerance ISO 6H  |
| EXAMPLE OF CODE DESIGNATION  |

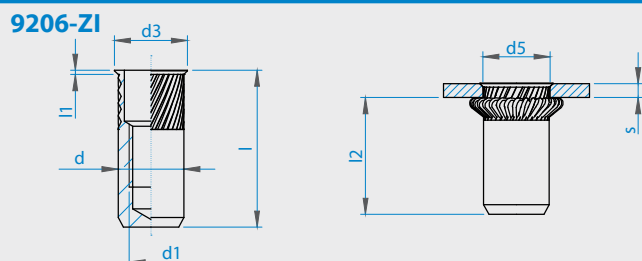
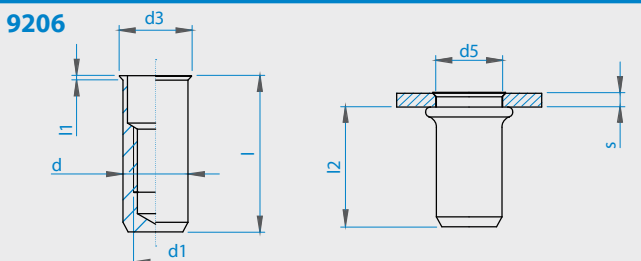
Threaded tubular closed end rivet nuts with low profile head, grip thicknesses 2,0 mm, M 6 thread, stainless steel: 9206A/M 6/X

| SERIES 9206-ZI (knurled)   |
|--|
| MATERIAL   |
| Steel nr. 1.0718 (on demand M12 thread) _____ / ____ /8ZI        |
| Acciaio inox nr. 1.4305 (on demand M12 thread) _____ / ____ /XZI |
| SURFACE TREATMENT  |
| Steel rivet nuts: white zinc plating                             |
| Stainless steel rivet nuts: natural state                        |
| THREAD TOLERANCE   |
| Metrical tolerance ISO 6H  |
| EXAMPLE OF CODE DESIGNATION                                      |

Threaded tubular closed end rivet nuts with low profile head and knurled body, grip thicknesses 2,0 mm, M 6 thread, stainless steel: 9206A/M 6/XZI

For the versions B the knurling part might be detached from the head.

**Juno Industries BVBA - Stoktevijver 22 - 9930 Zomergem/België/Belgique**  
 Tel/tél: (0)9/395.95.90 - Fax: (0)9/395.95.91 - co@junoindustries.eu



# Deform-Nut®

## SERIE 9202-ZI

S E R I E S

THREADED TUBULAR RIVET NUTS WITH COUNTERSUNK HEAD AND INCLINED KNURLING



Ref. UNI 9202 standard

| APPLICATION   |
|---|
| On boxed and tubular sections, metal sheets, other materials. |
| ASSEMBLY  |
| By specific manual and pneumatic tools.                       |

| CODE           | Grip range | Total length | Metrical thread | Shaft Ø | Head Ø | Head thicknesses | Hole Ø             | Rear length |
|----------------|------------|--------------|-----------------|---------|--------|------------------|--------------------|-------------|
|                | (s)        | (l)          | (d1)<br>6H      | (d)     | (d3)   | (l1)             | (d5)<br>+0,15<br>0 | (l2)<br>*   |
| 9202A/M 3/_Z_  | 1,6 ÷ 3,5  | 10           | M 3             | 5       | 8      | 1,5              | 5                  | 5,5         |
| 9202B/M 3/_Z_  | 3,5 ÷ 5,0  | 11,5         |                 |         |        |                  |                    |             |
| 9202A/M 4/_Z_  | 1,6 ÷ 3,5  | 11           | M 4             | 6       | 9      | 1,5              | 6                  | 6           |
| 9202B/M 4/_Z_  | 3,5 ÷ 5,5  | 13           |                 |         |        |                  |                    |             |
| 9202A/M 5/_Z_  | 1,6 ÷ 4,0  | 13           | M 5             | 7       | 10     | 1,5              | 7                  | 7,5         |
| 9202B/M 5/_Z_  | 4,0 ÷ 6,0  | 15           |                 |         |        |                  |                    |             |
| 9202A/M 6/_Z_  | 1,6 ÷ 4,5  | 16,5         | M 6             | 9       | 12     | 1,5              | 9                  | 11          |
| 9202B/M 6/_Z_  | 4,5 ÷ 7,0  | 19           |                 |         |        |                  |                    |             |
| 9202A/M 8/_Z_  | 1,6 ÷ 5,0  | 17,5         | M 8             | 11      | 14     | 1,5              | 11                 | 11          |
| 9202B/M 8/_Z_  | 5,0 ÷ 7,5  | 20           |                 |         |        |                  |                    |             |
| 9202A/M 10/_Z_ | 1,6 ÷ 5,0  | 21           | M 10            | 13      | 16     | 1,5              | 13                 | 14          |
| 9202B/M 10/_Z_ | 5,0 ÷ 7,5  | 23,5         |                 |         |        |                  |                    |             |
| 9202A/M 12/_Z_ | 1,6 ÷ 5,0  | 24,5         | M 12            | 15      | 18     | 1,5              | 15                 | 17,5        |
| 9202B/M 12/_Z_ | 5,0 ÷ 8,0  | 27,5         |                 |         |        |                  |                    |             |

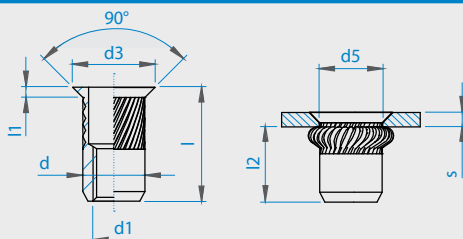
\* Dimensions measured on average thicknesses. Variable according to s dimension.

| MATERIAL  |
|---|
| Steel nr. 1.0718 (on demand M12 thread) _____ / ____ /8ZI           |
| Stainless steel nr. 1.4305 (on demand M12 thread) _____ / ____ /XZI |
| SURFACE TREATMENT   |
| Steel rivet nuts: white zinc plating                                |
| Stainless steel rivet nuts: natural state                           |

| THREAD TOLERANCE  |
|---|
| Metrical tolerance ISO 6H   |
| EXAMPLE OF CODE DESIGNATION   |
| Threaded tubular rivet nuts with countersunk head and inclined knurling, grip thicknesses 2,0 mm, stainless steel: <b>9202A/M 6/XZI</b> |
| For the versions B the knurling part might be detached from the head.   |

Juno Industries BVBA - Stoktevijver 22 - 9930 Zomergem/België/Belgique  
Tel/tél: (0)9/395.95.90 - Fax: (0)9/395.95.91 - co@junoindustries.eu

Non binding dimensions, expressed in mm.



# Deform-Nut® SERIE 9205-ZI

S E R I E S

THREADED TUBULAR CLOSED END RIVET NUTS WITH  
COUNTERSUNK HEAD AND INCLINED KNURLING



| APPLICATION   |
|---|
| On boxed and tubular sections, metal sheets, other materials. |
| <b>MONTAGGIO   ASSEMBLY</b>                                   |
| By specific manual and pneumatic tools.                       |

Ref. UNI 9205 standard

| CODE           | Grip range | Total length | Metrical thread | Shaft Ø | Head Ø | Head thickness | Hole Ø             | Rear length |
|----------------|------------|--------------|-----------------|---------|--------|----------------|--------------------|-------------|
|                | (s)        | (l)          | (d1)<br>6H      | (d)     | (d3)   | (l1)<br>~      | (d5)<br>+0,15<br>0 | (l2)<br>*   |
| 9205A/M 3/_ZI  | 1,6 ÷ 3,5  | 13,5         | M 3             | 5       | 8      | 1,5            | 5                  | 9           |
| 9205B/M 3/_ZI  | 3,5 ÷ 5,0  | 15           |                 |         |        |                |                    |             |
| 9205A/M 4/_ZI  | 1,6 ÷ 3,5  | 15,5         | M 4             | 6       | 9      | 1,5            | 6                  | 10,5        |
| 9205B/M 4/_ZI  | 3,5 ÷ 5,5  | 17,5         |                 |         |        |                |                    |             |
| 9205A/M 5/_ZI  | 1,6 ÷ 4,0  | 18,5         | M 5             | 7       | 10     | 1,5            | 7                  | 13          |
| 9205B/M 5/_ZI  | 4,0 ÷ 6,0  | 20,5         |                 |         |        |                |                    |             |
| 9205A/M 6/_ZI  | 1,6 ÷ 4,5  | 23           | M 6             | 9       | 12     | 1,5            | 9                  | 17,5        |
| 9205B/M 6/_ZI  | 4,5 ÷ 7,0  | 25,5         |                 |         |        |                |                    |             |
| 9205A/M 8/_ZI  | 1,6 ÷ 5,0  | 25,5         | M 8             | 11      | 14     | 1,5            | 11                 | 19          |
| 9205B/M 8/_ZI  | 5,0 ÷ 7,5  | 28           |                 |         |        |                |                    |             |
| 9205A/M 10/_ZI | 1,6 ÷ 5,0  | 30           | M 10            | 13      | 16     | 1,5            | 13                 | 23          |
| 9205B/M 10/_ZI | 5,0 ÷ 7,5  | 32,5         |                 |         |        |                |                    |             |
| 9205A/M 12/_ZI | 1,6 ÷ 5,0  | 36           | M 12            | 15      | 18     | 1,5            | 15                 | 29          |
| 9205B/M 12/_ZI | 5,0 ÷ 8,0  | 39           |                 |         |        |                |                    |             |

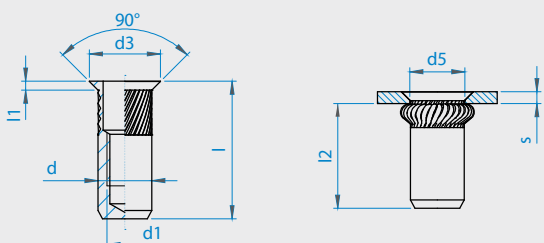
\* Dimensions measured on average thicknesses. Variable according to s dimension.

| MATERIAL   |
|--|
| Steel nr. 1.0718 (on demand M12 thread) _____ / ____/8ZI           |
| Stainless steel nr. 1.4305 (on demand M12 thread) _____ / ____/XZI |
| SURFACE TREATMENT  |
| Steel rivet nuts: white zinc plating                               |
| Stainless steel rivet nuts: natural state                          |

| THREAD TOLERANCE            |
|-----------------------------|
| Metrical tolerance ISO 6H   |
| EXAMPLE OF CODE DESIGNATION |

Threaded tubular closed end rivet nuts with countersunk head and inclined knurling, grip thicknesses 2,0 mm, M 6 thread, stainless steel: **9205A/M 6/XZI**  
For the versions B the knurling part might be detached from the head.  
Non binding dimensions, expressed in mm.

Juno Industries BVBA - Stoktevijver 22 - 9930 Zomergem/België/Belgique  
Tel/tél: (0)9/395.95.90 - Fax: (0)9/395.95.91 - co@junoindustries.eu



# Deform-Nut®

## SERIE 10448

S E R I E S



THREADED TUBULAR RIVET NUT WITH ROUND HEAD  
AND HEXAGONAL SHANK

### APPLICATION

On box and tubular sections, metal sheets, other materials.

### ASSEMBLY

By specific manual and pneumatic tools.

Ref. UNI 10448 standard

| CODE             | Grip range | Total lenght | Metrical thread | Hexagonal shank | Head Ø | Head thicknesses | Hexagonal hole     | Rear lenght |
|------------------|------------|--------------|-----------------|-----------------|--------|------------------|--------------------|-------------|
|                  | (s)        | (l)          | (d1)<br>6H      | (ch)            | (d3)   | (l1)             | (d5)<br>+0,15<br>0 | (l2)<br>*   |
| **10448A1/ M 3/_ | 0,5 ÷ 2,0  | 10           | M 3             | 5               | 8      | 0,8              | 5                  | 6           |
| **10448B1/ M 3/_ | 2,0 ÷ 3,5  | 11           |                 |                 |        |                  |                    |             |
| 10448A1/ M 4/_   | 0,5 ÷ 2,0  | 10,5         | M 4             | 6               | 9      | 0,8              | 6                  | 6,5         |
| 10448B1/ M 4/_   | 2,0 ÷ 4,0  | 12,5         |                 |                 |        |                  |                    |             |
| 10448A1/ M 5/_   | 0,5 ÷ 2,5  | 12,5         | M 5             | 7               | 10     | 1                | 7                  | 7           |
| 10448B1/ M 5/_   | 2,5 ÷ 4,5  | 14,5         |                 |                 |        |                  |                    |             |
| 10448A1/ M 6/_   | 0,5 ÷ 3,0  | 16           | M 6             | 9               | 12     | 1,2              | 9                  | 9,5         |
| 10448B1/ M 6/_   | 3,0 ÷ 5,5  | 18,5         |                 |                 |        |                  |                    |             |
| 10448A1/ M 8/_   | 0,5 ÷ 3,5  | 17           | M 8             | 11              | 14     | 1,3              | 11                 | 9,5         |
| 10448B1/ M 8/_   | 3,5 ÷ 6,0  | 19,5         |                 |                 |        |                  |                    |             |
| 10448A1/ M 10/_  | 0,5 ÷ 3,5  | 21,5         | M 10            | 13              | 17     | 1,7              | 13                 | 12,5        |
| 10448B1/ M 10/_  | 3,5 ÷ 6,0  | 24           |                 |                 |        |                  |                    |             |

\* Dimensions measured on average thicknesses. Variable according to s dimension.

\*\* No UNI standard.

### MATERIAL

Steel nr. 1.0303 (on demand M3 thread) \_\_\_\_\_ / \_\_\_\_ /8

Stainless steel nr. 1.4567 (excluding thread M3) \_\_\_\_\_ / \_\_\_\_ /X

### SURFACE TREATMENT

Steel rivet nuts: white zinc plating

Stainless steel rivet nuts: natural state

### THREAD TOLERANCE

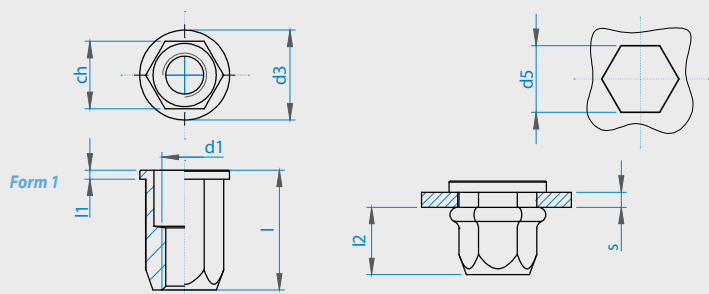
Metrical tolerance ISO 6H

### EXAMPLE OF CODE DESIGNATION

Threaded tubular rivet nut with round head and hexagonal shank, grip thicknesses 2,0 mm, M 6 thread, stainless steel: **10448A1/M 6/X**

Juno Industries BVBA - Stoktevijver 22 - 9930 Zomergem/België/Belgique  
Tel/tél: (0)9/395.95.90 - Fax: (0)9/395.95.91 - co@junoindustries.eu

Non binding dimensions, expressed in mm.





# Deform-Nut® SERIE 10446

S E R I E S

THREADED TUBULAR CLOSED END RIVET NUT WITH ROUND HEAD AND HEXAGONAL SHANK



Ref. UNI 10446 standard

| APPLICATION   |
|---|
| On boxed and tubular sections, metal sheets, other materials. |
| ASSEMBLY  |
| By specific manual and pneumatic tools.                       |

| CODE             | Grip range | Total length | Metrical thread | Hexagonal shank | Head Ø | Head thicknesses | Hexagonal hole     | Rear length |
|------------------|------------|--------------|-----------------|-----------------|--------|------------------|--------------------|-------------|
|                  | (s)        | (l)          | (d1)<br>6H      | (ch)            | (d3)   | (l1)             | (d5)<br>+0,15<br>0 | (l2)<br>*   |
| **10446A1/ M 3/_ | 0,5 ÷ 2,0  | 13           | M 3             | 5               | 8      | 0,8              | 5                  | 9,5         |
| **10446B1/ M 3/_ | 2,0 ÷ 3,5  | 14,5         |                 |                 |        |                  |                    |             |
| 10446A1/ M 4/_   | 0,5 ÷ 2,0  | 15           | M 4             | 6               | 9      | 0,8              | 6                  | 11          |
| 10446B1/ M 4/_   | 2,0 ÷ 4,0  | 17           |                 |                 |        |                  |                    |             |
| 10446A1/ M 5/_   | 0,5 ÷ 2,5  | 18           | M 5             | 7               | 10     | 1                | 7                  | 12,5        |
| 10446B1/ M 5/_   | 2,5 ÷ 4,5  | 20           |                 |                 |        |                  |                    |             |
| 10446A1/ M 6/_   | 0,5 ÷ 3,0  | 22,5         | M 6             | 9               | 12     | 1,2              | 9                  | 16          |
| 10446B1/ M 6/_   | 3,0 ÷ 5,5  | 25           |                 |                 |        |                  |                    |             |
| 10446A1/ M 8/_   | 0,5 ÷ 3,5  | 25           | M 8             | 11              | 14     | 1,3              | 11                 | 17,5        |
| 10446B1/ M 8/_   | 3,5 ÷ 6,0  | 27,5         |                 |                 |        |                  |                    |             |
| 10446A1/ M 10/_  | 0,5 ÷ 3,5  | 30,5         | M 10            | 13              | 17     | 1,7              | 13                 | 21,5        |
| 10446B1/ M 10/_  | 3,5 ÷ 6,0  | 33           |                 |                 |        |                  |                    |             |

\* Dimensions measured on average thicknesses. Variable according to s dimension.

\*\* No UNI standard.

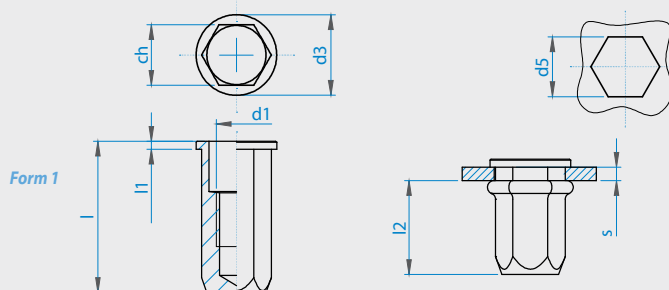
| MATERIAL  |
|---|
| Steel nr. 1.0303 (on demand for M3 thread) _____ / ____ / 8       |
| Stainless steel nr. 1.4567 (excluding thread M3) _____ / ____ / X |
| SURFACE TREATMENT   |
| Steel rivet nuts: white zinc plating                              |
| Stainless steel rivet nuts: natural state                         |

| THREAD TOLERANCE            |
|-----------------------------|
| Metrical tolerance ISO 6H   |
| EXAMPLE OF CODE DESIGNATION |

Threaded tubular closed end rivet nut with round head and hexagonal shank, grip thicknesses 2,0 mm, M6 thread, stainless steel: **10446A1 M6/X**

**Juno Industries BVBA - Stoktevijver 22 - 9930 Zomergem/België/Belgique**  
**Tel/tél: (0)9/395.95.90 - Fax: (0)9/395.95.91 - co@junoindustries.eu**

Non binding dimensions, expressed in mm.





# Deform-Nut® SERIE 10447

S E R I E S

THREADED TUBULAR RIVET NUT WITH LOW PROFILE HEAD AND HEXAGONAL SHANK



Ref. UNI 10447 standard

| APPLICATION  |
|--|
| On boxed and tubular sections, metal sheets, other materials.                                    |
| MONTAGGIO   ASSEMBLY   |
| Mediante apposite attrezzature manuali o pneumatiche.<br>By specific manual and pneumatic tools. |

| CODE             | Grip range | Total lenght | Metrical thread | Hexagonal shank | Hex key | Head thicknesses | Hexagonal hole     | Rear lenght |
|------------------|------------|--------------|-----------------|-----------------|---------|------------------|--------------------|-------------|
|                  | (s)        | (l)          | (d1)<br>6H      | (ch)            | (d3)    | (l1)<br>~        | (d5)<br>+0,15<br>0 | (l2)<br>*   |
| **10447A1/ M 3/_ | 0,5 ÷ 2,0  | 9            | M 3             | 5               | 5,75    | 0,4              | 5                  | 6           |
| **10447B1/ M 3/_ | 2,0 ÷ 3,5  | 10,5         |                 |                 |         |                  |                    |             |
| 10447A1/ M 4/_   | 0,5 ÷ 2,0  | 10           | M 4             | 6               | 6,75    | 0,5              | 6                  | 6,5         |
| 10447B1/ M 4/_   | 2,0 ÷ 4,0  | 12           |                 |                 |         |                  |                    |             |
| 10447A1/ M 5/_   | 0,5 ÷ 2,5  | 12,5         | M 5             | 7               | 8       | 0,6              | 7                  | 7           |
| 10447B1/ M 5/_   | 2,5 ÷ 4,5  | 14,5         |                 |                 |         |                  |                    |             |
| 10447A1/ M 6/_   | 0,5 ÷ 3,0  | 15           | M 6             | 9               | 10      | 0,7              | 9                  | 9,5         |
| 10447B1/ M 6/_   | 3,0 ÷ 5,5  | 17,5         |                 |                 |         |                  |                    |             |
| 10447A1/ M 8/_   | 0,5 ÷ 3,5  | 17           | M 8             | 11              | 12      | 0,7              | 11                 | 9,5         |
| 10447B1/ M 8/_   | 3,5 ÷ 6,0  | 19,5         |                 |                 |         |                  |                    |             |
| 10447A1/ M 10/_  | 0,5 ÷ 3,5  | 21           | M 10            | 13              | 14,5    | 0,85             | 13                 | 12,5        |
| 10447B1/ M 10/_  | 3,5 ÷ 6,0  | 23,5         |                 |                 |         |                  |                    |             |

\* Dimensions measured on average thicknesses. Variable according to s dimension.  
\*\* No UNI standard.

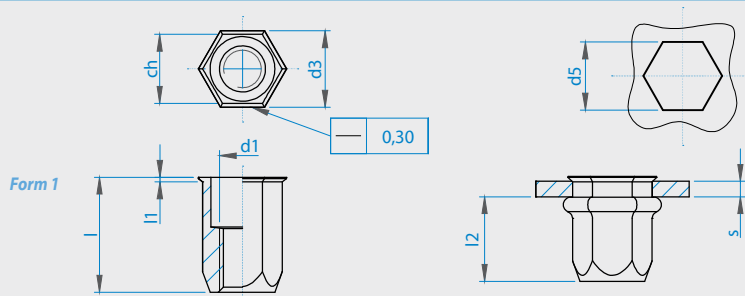
| MATERIAL   |
|--|
| Steel nr. 1.0303 _____ / ____ /8                                 |
| Stainless steel nr. 1.4567 (excluding thread M3) _____ / ____ /X |
| SURFACE TREATMENT  |
| Steel rivet nuts: white zinc plating                             |
| Stainless steel rivet nuts: natural state                        |

| THREAD TOLERANCE            |
|-----------------------------|
| Metrical tolerance ISO 6H   |
| EXAMPLE OF CODE DESIGNATION |

Threaded tubular rivet nut with low profile head and hexagonal shank, grip thicknesses 2,0 mm, M 6 thread, stainless steel: **10447A1/M 6/X**

Juno Industries BVBA - Stoktevijver 22 - 9930 Zomergem/België/Belgique  
Tel/tél: (0)9/395.95.90 - Fax: (0)9/395.95.91 - co@junoindustries.eu

Non binding dimensions, expressed in mm.



# Deform-Nut®

## SERIE 10445

S E R I E S

THREADED TUBULAR CLOSED END RIVET NUT WITH LOW PROFILE HEAD AND HEXAGONAL SHANK



Ref. UNI 10445 standard

| APPLICATION   |
|---|
| On boxed and tubular sections, metal sheets, other materials. |
| ASSEMBLY  |
| By specific manual and pneumatic tools.                       |

| CODE             | Grip range | Total length | Metrical thread | Hexagonal shank | Hex key | Head thicknesses | Hexagonal hole     | Rear length |
|------------------|------------|--------------|-----------------|-----------------|---------|------------------|--------------------|-------------|
|                  | (s)        | (l)          | (d1)<br>6H      | (ch)            | (d3)    | (l1)<br>~        | (d5)<br>+0,15<br>0 | (l2)<br>*   |
| **10445A1/ M 3/_ | 0,5 ÷ 2,0  | 12,5         | M 3             | 5               | 5,75    | 0,4              | 5                  | 9,5         |
| **10445B1/ M 3/_ | 2,0 ÷ 3,5  | 14           |                 |                 |         |                  |                    |             |
| 10445A1/ M 4/_   | 0,5 ÷ 2,0  | 14,5         | M 4             | 6               | 6,75    | 0,5              | 6                  | 11          |
| 10445B1/ M 4/_   | 2,0 ÷ 4,0  | 16,5         |                 |                 |         |                  |                    |             |
| 10445A1/ M 5/_   | 0,5 ÷ 2,5  | 18           | M 5             | 7               | 8       | 0,6              | 7                  | 12,5        |
| 10445B1/ M 5/_   | 2,5 ÷ 4,5  | 20           |                 |                 |         |                  |                    |             |
| 10445A1/ M 6/_   | 0,5 ÷ 3,0  | 21,5         | M 6             | 9               | 10      | 0,7              | 9                  | 16          |
| 10445B1/ M 6/_   | 3,0 ÷ 5,5  | 24           |                 |                 |         |                  |                    |             |
| 10445A1/ M 8/_   | 0,5 ÷ 3,5  | 25           | M 8             | 11              | 12      | 0,7              | 11                 | 17,5        |
| 10445B1/ M 8/_   | 3,5 ÷ 6,0  | 27,5         |                 |                 |         |                  |                    |             |
| 10445A1/ M 10/_  | 0,5 ÷ 3,5  | 30           | M 10            | 13              | 14,5    | 0,85             | 13                 | 21,5        |
| 10445B1/ M 10/_  | 3,5 ÷ 6,0  | 32,5         |                 |                 |         |                  |                    |             |

\* Dimensions measured on average thicknesses. Variable according to s dimension.

\*\* No UNI standard.

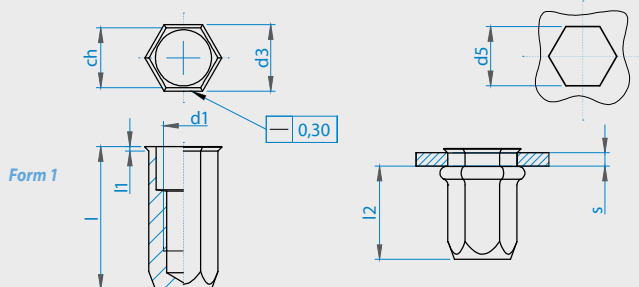
| MATERIAL  |
|---|
| Steel nr. 1.0303 (on demand M3 thread) _____ / ____ /8        |
| Acciaio inox nr. 1.4567 (excluding thread M3) _____ / ____ /X |
| SURFACE TREATMENT   |
| Steel rivet nuts: white zinc plating                          |
| Stainless steel rivet nuts: natural state                     |

| THREAD TOLERANCE            |
|-----------------------------|
| Metrical tolerance ISO 6H   |
| EXAMPLE OF CODE DESIGNATION |

Threaded tubular closed end rivet nut with low profile head and hexagonal shank, grip thicknesses 2,0 mm, M 6 thread, stainless steel: **10445A1/M 6/X**

Juno Industries BVBA - Stoktevijver 22 - 9930 Zomergem/België/Belgique  
Tel/tél: (0)9/395.95.90 - Fax: (0)9/395.95.91 - co@junoindustries.eu

Non binding dimensions, expressed in mm.



# Deform-Nut® SERIE TC/DIST

S E R I E S

THREADED TUBULAR RIVET NUTS WITH ROUND SPACING HEAD



|   |
|---|
| <b>APPLICATION</b>  |
| On boxed and tubular sections, metal sheets, other materials. |
| <b>ASSEMBLY</b>   |
| By specific manual and pneumatic tools.                       |

| CODE             | Grip range | Total length | Metrical thread    | Shaft Ø | Head Ø | Head thicknesses | Hole Ø                      | Rear length       |
|------------------|------------|--------------|--------------------|---------|--------|------------------|-----------------------------|-------------------|
|                  | (s)        | (l)          | (d1) <sub>6H</sub> | (d)     | (d3)   | (l1)             | (d5) <sub>+0,15<br/>0</sub> | (l2) <sub>*</sub> |
| TC/DIST M 3/_    | 0,5 ÷ 2,0  | 16,7         | M 3                | 5       | 8      | 8                | 5                           | 6                 |
| TC/DIST/L M 3/_  | 2,0 ÷ 3,5  | 18,2         |                    |         |        |                  |                             |                   |
| TC/DIST M 4/_    | 0,5 ÷ 2,0  | 17,7         | M 4                | 6       | 9      | 8                | 6                           | 6,5               |
| TC/DIST/L M 4/_  | 2,0 ÷ 4,0  | 19,7         |                    |         |        |                  |                             |                   |
| TC/DIST M 5/_    | 0,5 ÷ 2,5  | 19,5         | M 5                | 7       | 10     | 8                | 7                           | 7                 |
| TC/DIST/L M 5/_  | 2,5 ÷ 4,5  | 21,5         |                    |         |        |                  |                             |                   |
| TC/DIST M 6/_    | 0,5 ÷ 3,0  | 22,8         | M 6                | 9       | 12     | 8                | 9                           | 9,5               |
| TC/DIST/L M 6/_  | 3,0 ÷ 5,5  | 25,3         |                    |         |        |                  |                             |                   |
| TC/DIST M 8/_    | 0,5 ÷ 3,5  | 23,7         | M 8                | 11      | 14     | 8                | 11                          | 9,5               |
| TC/DIST/L M 8/_  | 3,5 ÷ 6,0  | 26,2         |                    |         |        |                  |                             |                   |
| TC/DIST M 10/_   | 0,5 ÷ 3,5  | 27,5         | M 10               | 13      | 16     | 8                | 13                          | 12,5              |
| TC/DIST/L M 10/_ | 3,5 ÷ 6,0  | 30           |                    |         |        |                  |                             |                   |

\* Dimensions measured on average thicknesses. Variable according to s dimension.

|  |                 |
|--|-----------------|
| <b>MATERIAL</b>  | _____ / ____ /8 |
| Steel nr. 1.0718<br>(on demand M10 thread - long/L version on request) |                 |
| Stainless steel nr. 1.4305 (on demand)                                 | _____ / ____ /X |
| <b>SURFACE TREATMENT</b>   |                 |
| Steel rivet nuts: white zinc plating                                   |                 |
| Stainless steel rivet nuts: natural state                              |                 |

|                                    |                           |
|------------------------------------|---------------------------|
| <b>THREAD TOLERANCE</b>            | Metrical tolerance ISO 6H |
| <b>EXAMPLE OF CODE DESIGNATION</b> |                           |

Threaded tubular rivet nuts with round spacing head, grip thicknesses 2,0 mm, M 6 thread, stainless steel: **TC/DIST M 6/X**

Non binding dimensions, expressed in mm.

Juno Industries BVBA - Stoktevijver 22 - 9930 Zomergem/België/Belgique  
Tel/tél: (0)9/395.95.90 - Fax: (0)9/395.95.91 - co@junoindustries.eu

