

S-Lok® SERIES 863 - 864



SYMMETRICAL THREADED INSERTS

APPLICATION	ASSEMBLY
Thermoplastic materials.	Ultrasonic, heat, overmoulding.
Thermosetting materials.	Overmoulding.
Important for automatic assembly.	

SERIES 863

PRODUCT		CODE	Metric thread	External diameter	Total length	Hole diameter	Minimum wall thickness
S**	R***		(d1)	(d2)	(L)	(d3)	(S)
	●	863 0020.80	M 2	3.5	4.0	3.2	1.5
	●	863 0025.80	M 2.5	4.4	5.8	4.0	1.8
	●	863 0030.80	M 3	4.4	5.8	4.0	1.8
	●	863 0035.80	M 3.5	5.2	7.2	4.8	2.2
	●	863 0040.80	M 4	6.0	8.2	5.6	2.5
	●	863 0050.80	M 5	6.8	9.5	6.4	3
	●	863 0060.80	M 6	8.4	12.7	8.0	3.5
	●	863 0080.80	M 8	10.0	12.7	9.6	4.5
	●	863 0100.80	M 10	12.3	12.7	11.9	5.5

The use of S-Lok® 863 is particularly suggested for polycarbonates or plastic materials subject to cracks.

SERIES 864

PRODUCT		CODE	Metric thread	External diameter	Total length	Hole diameter	Minimum wall thickness
S**	R***		(d1)	(d2)	(L)	(d3)	(S)
	●	864 0020.80	M 2	3.5	4.0	3.2	1.5
	●	864 0025.80	M 2.5	4.4	5.8	4.0	1.8
	●	864 0030.80	M 3	4.4	5.8	4.0	1.8
	●	864 0035.80	M 3.5	5.2	7.2	4.8	2.2
	●	864 0040.80	M 4	6.0	8.2	5.6	2.5
	●	864 0050.80	M 5	6.8	9.5	6.4	3
	●	864 0060.80	M 6	8.4	12.7	8.0	3.5
	●	864 0080.80	M 8	10.0	12.7	9.6	4.5
	●	864 0100.80	M 10	12.3	12.7	11.9	5.5

• MATERIAL

Brass

• FINISHING

Natural

• TOLERANCES

ISO 2768-m

• THREADING d1

ISO 6H

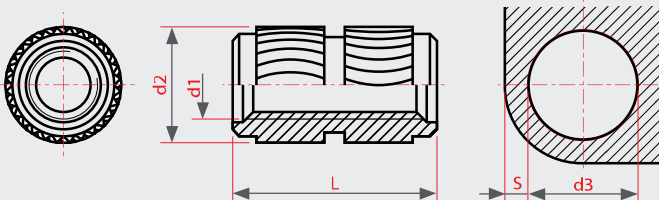
• EXAMPLE OF CODE DESIGNATION

Threaded insert S-Lok® for polycarbonates, M 5 thread, brass: **863 0050.80**

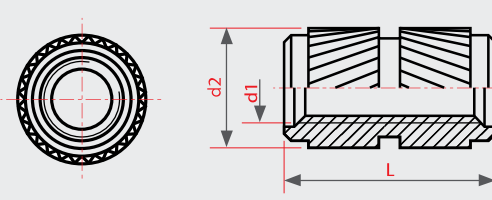
S** standard	R*** on demand
-----------------	-------------------

Non binding dimensions, expressed in mm.

For a correct usage of the product it is advisable to carry out some preliminary assembling tests to determine the correct hole diameter.



SERIES 863



SERIES 864