

S-Lok® SERIES 860 - 861 - 862

THREADED INSERTS

APPLICATION	ASSEMBLY
Thermoplastic materials.	Ultrasonic, heat, overmoulding.
Thermosetting materials.	Overmoulding.



SERIES 860 - 861

PRODUCT		CODE	Metric thread	External diameter	Total length	Hole diameter	Minimum wall thickness	CODE	Total length
S**	R***		(d1)	(d2)	(L)	(d3)	(S)		(L)
	●	860 0 020.80	M 2	3.6	4.0	3.2	2.0	-	-
	●	860 0 025.80	M 2.5	4.6	5.8	4.0	2.3	861 0025.80	4.0
●		860 0 030.80	M 3	4.6	5.8	4.0	2.3	861 0030.80	4.0
	●	860 0 035.80	M 3.5	5.4	7.2	4.8	2.5	861 035.80	5.8
●		860 0 040.80	M 4	6.3	8.2	5.6	2.5	861 0040.80	7.2
●		860 0 050.80	M 5	7.0	9.5	6.4	2.7	861 0050.80	8.2
●		860 0 060.80	M 6	8.6	12.7	8.0	3.0	861 0060.80	9.5
●		860 0 080.80	M 8	10.2	12.7	9.6	3.5	861 0080.80	9.5
	●	860 0 100.80	M 10	12.3	12.7	11.7	4.0	861 0100.80	9.5

SERIES 862

PRODOTTO		CODICE	Metric thread	External diameter	Head diameter	Thickness head	Anchorage dimension	Hole diameter	Minimum wall thickness
S**	R***		(d1)	(d2)	(d4)	(L2)	(L1)	(d3)	(S)
	●	862 0020.80	M 2	3.6	4.8	0.6	4.0	3.2	2.0
	●	862 0025.80	M 2.5	4.6	5.6	0.6	5.8	4.0	2.3
●		862 0030.80	M 3	4.6	5.6	0.6	5.8	4.0	2.3
	●	862 0035.80	M 3.5	5.4	6.4	0.8	7.2	4.8	2.5
●		862 0040.80	M 4	6.3	7.2	0.8	8.2	5.6	2.5
●		862 0050.80	M 5	7.0	8.0	1.0	9.5	6.4	2.7
●		862 0060.80	M 6	8.6	9.5	1.3	12.7	8.0	3.0
●		862 0080.80	M 8	10.2	11.0	1.3	12.7	9.6	3.5
	●	862 0100.80	M 10	12.3	14.0	1.3	12.7	11.7	4.0

• MATERIAL

Brass

• FINISHING

Natural

• TOLERANCES

ISO 2768-m

• THREADING d1

ISO 6H

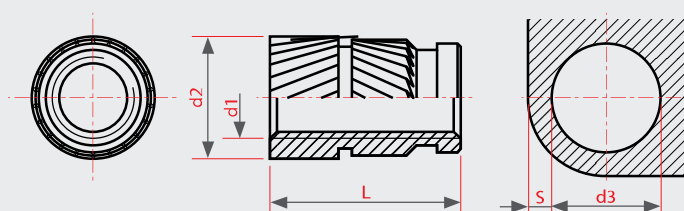
• EXAMPLE OF CODE DESIGNATION

Threaded insert S-Lok® with head, M 5 thread, brass: **862 0050.80**

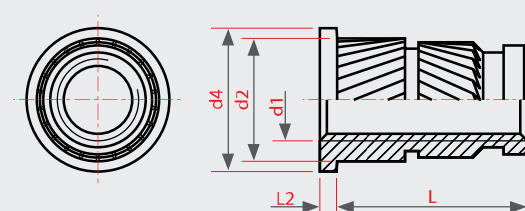
S** standard	R*** on demand
-----------------	-------------------

Non binding dimensions, expressed in mm.

For a correct usage of the product it is advisable to carry out some preliminary assembling tests to determine the correct hole diameter.



SERIES 860 - 861



SERIES 862