

Mubux® SERIES 856- 857

PRESSED-IN THREADED STUDS

APPLICATION
Rigid thermoplastic materials.
ASSEMBLY
By pressure.



SERIES 856

PRODUCT		CODE	Metric thread	External diameter	Anchorage dimension	Hole diameter	Minimum wall thickness
S**	R***		(d1)	(d2)	(L1)	(d3)	(S)
	●	856 0020.8_	M 2	3.35	4.0	3.1	1.6
	●	856 0025.8_	M 2.5	4.2	5.3	3.8	2.0
	●	856 0030.8_	M 3	4.2	5.3	3.8	2.0
	●	856 0035.8_	M 3.5	5.0	6.3	4.6	2.5
	●	856 0040.8_	M 4	5.8	7.4	5.4	2.5
	●	856 0050.8_	M 5	6.6	8.3	6.2	2.5
	●	856 0060.8_	M 6	8.2	9.2	7.8	2.8
	●	856 0080.8_	M 8	9.7	9.2	9.3	3.8

AVAILABLE STUD LENGTH (TABLE 1)

CODE final data	Stud length			
	(L3)	M 2 M 2.5	M 3 M 3.5 M 4	M 5 M 6 M 8
_____.2	6	●	●	●
_____.4	10	●	●	●
_____.6	16	●	●	●
_____.8	25	●	●	●

THREAD LENGTH L4 = L3 - 2P
P = THREAD PITCH

SERIES 857

PRODUCT		CODE	Metric thread	External diameter	Head diameter	Head thickness	Anchorage dimension	Hole diameter	Minimum wall thickness
S**	R***		(d1)	(d2)	(d4)	(L2)	(L1)	(d3)	(S)
	●	857 0020.8_	M 2	3.35	4.8	0.6	4.0	3.1	1.6
	●	857 0025.8_	M 2.5	4.2	5.6	0.6	5.3	3.8	2.0
	●	857 0030.8_	M 3	4.2	5.6	0.6	5.3	3.8	2.0
	●	857 0035.8_	M 3.5	5.0	6.4	0.8	6.3	4.6	2.5
	●	857 0040.8_	M 4	5.8	7.2	0.8	7.4	5.4	2.5
	●	857 0050.8_	M 5	6.6	8.0	1.0	8.3	6.2	2.5
	●	857 0060.8_	M 6	8.2	9.5	1.3	9.2	7.8	2.8
	●	857 0080.8_	M 8	9.7	11.0	1.3	9.2	9.3	3.8

• **MATERIAL**

Brass

• **FINISHING**

Natural

• **TOLERANCES**

ISO 2768-m

• **THREADING d1**

ISO 6g

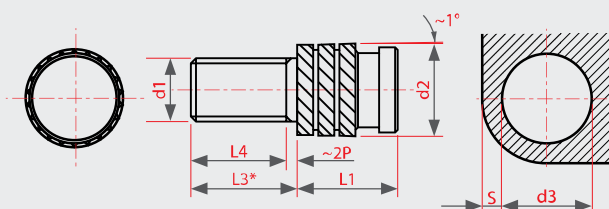
• **EXAMPLE OF CODE DESIGNATION**

Threaded insert Mubux®, M 5 thread, brass, stud length 16 mm: **856 0050.86**

S** standard	R*** on demand
------------------------	--------------------------

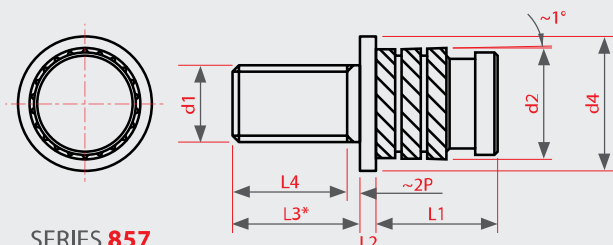
Non binding dimensions, expressed in mm.

For a correct usage of the product it is advisable to carry out some preliminary assembling tests to determine the correct hole diameter.



SERIES 856

* stud length L3: see Table 1.



SERIES 857

* stud length L3: see Table 1.