

Mubux® SERIES 850 - 852



PRESSED-IN THREADED INSERTS

APPLICATION

Rigid thermoplastic materials.

ASSEMBLY

By pressure.

SERIES 850

PRODUCT		CODE	Metric thread	External diameter	Total length	Hole diameter	Minimum wall thickness
S**	R***		(d1)	(d2)	(L)	(d3)	(S)
	●	850 0020.80	M 2	3.35	4.0	3.1	1.6
	●	850 0025.80	M 2.5	4.2	5.3	3.7	2.0
●		850 0030.80	M 3	4.2	5.3	3.7	2.0
	●	850 0035.80	M 3.5	5.0	6.3	4.5	2.5
●		850 0040.80	M 4	5.8	7.4	5.3	2.5
●		850 0050.80	M 5	6.6	8.3	6.1	2.5
●		850 0060.80	M 6	8.2	9.2	7.7	2.8
●		850 0080.80	M 8	9.7	9.2	9.2	3.8
	●	850 0100.80	M 10	12.0	9.2	11.6	5.5

SERIES 852

PRODUCT		CODE	Metric thread	External diameter	Head diameter	Head thickness	Anchorage dimension	Hole diameter	Minimum wall thickness
S**	R***		(d1)	(d2)	(d4)	(L2)	(L1)	(d3)	(S)
	●	852 0020.80	M 2	3.35	4.8	0.6	4.0	3.1	1.6
	●	852 0025.80	M 2.5	4.2	5.6	0.6	5.3	3.7	2.0
●		852 0030.80	M 3	4.2	5.6	0.6	5.3	3.7	2.0
	●	852 0035.80	M 3.5	5.0	6.4	0.8	6.3	4.5	2.5
●		852 0040.80	M 4	5.8	7.2	0.8	7.4	5.3	2.5
●		852 0050.80	M 5	6.6	8.0	1.0	8.3	6.1	2.5
●		852 0060.80	M 6	8.2	9.5	1.3	9.2	7.7	2.8
●		852 0080.80	M 8	9.7	11.0	1.3	9.2	9.2	3.8
	●	852 0100.80	M 10	12.0	14.0	1.6	9.2	11.6	5.5

S**
standard

R***
on demand

• MATERIAL

Brass

• FINISHING

Natural

• TOLERANCES

ISO 2768-m

• THREADING d1

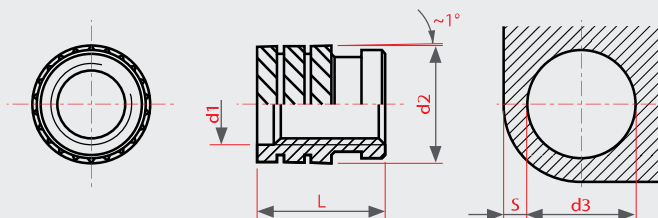
ISO 6H

• EXAMPLE OF CODE DESIGNATION

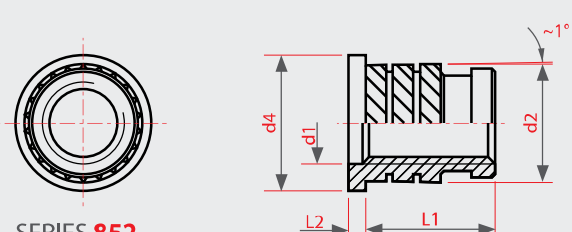
Threaded insert Mubux® with head, M 5 thread, brass: **852 0050.80**

Non binding dimensions, expressed in mm.

For a correct usage of the product it is advisable to carry out some preliminary assembling tests to determine the correct hole diameter.



SERIES 850



SERIES 852