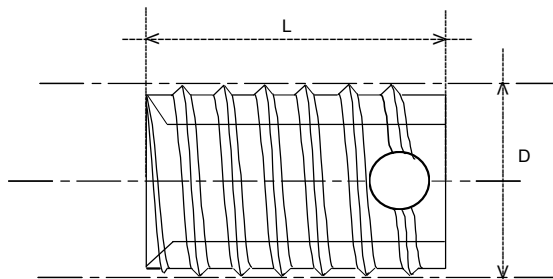




**Insert auto-taraudant à 3 trous
coupants ouverts**
Selftapping insert with 3 cutting holes

Modèle 013/014
Type 013/014



N° d'article: Article Nr:	Filetage int: Int thread:	L:	D:	Ø trou: Hole Ø:	Matière: Material:
013 406 03	M4	6mm	6,5*0,8mm	6,0-6,2mm	Inox303/Stainless st303
013 406 061	M4	6mm	6,5*0,8mm	6,0-6,2mm	Ac trempé zn blanc/St zn pl
013 406 07	M4	6mm	6,5*0,8mm	6,0-6,2mm	Inox316/Stainless st316
014 408 061	M4	8mm	6,5*0,8mm	6,0-6,2mm	Ac trempé zn blanc/St zn pl
014 408 07	M4	8mm	6,5*0,8mm	6,0-6,2mm	Inox316/Stainless st316
013 507 03	M5	7mm	8*1,0mm	7,4-7,7mm	Inox303/Stainless st303
013 507 061	M5	7mm	8*1,0mm	7,4-7,7mm	Ac trempé zn blanc/St zn pl
013 507 07	M5	7mm	8*1,0mm	7,4-7,7mm	Inox316/Stainless st316
014 510 03	M5	10mm	8*1,0mm	7,4-7,7mm	Inox303/Stainless st303
014 510 061	M5	10mm	8*1,0mm	7,4-7,7mm	Ac trempé zn blanc/St zn pl
013 608 03	M6	8mm	10*1,25mm	9,3-9,6mm	Inox303/Stainless st303
013 608 061	M6	8mm	10*1,25mm	9,3-9,6mm	Ac trempé zn blanc/St zn pl
013 608 07	M6	8mm	10*1,25mm	9,3-9,6mm	Inox316/Stainless st316
014 612 03	M6	12mm	10*1,25mm	9,3-9,6mm	Inox303/Stainless st303
014 612 061	M6	12mm	10*1,25mm	9,3-9,6mm	Ac trempé zn blanc/St zn pl
014 612 07	M6	12mm	10*1,25mm	9,3-9,6mm	Inox316/Stainless st316
013 809 03	M8	9mm	12*1,5mm	11,1-11,5mm	Inox303/Stainless st303
013 809 061	M8	9mm	12*1,5mm	11,1-11,5mm	Ac trempé zn blanc/St zn pl
013 809 07	M8	9mm	12*1,5mm	11,1-11,5mm	Inox316/Stainless st316
014 814 03	M8	14mm	12*1,5mm	11,1-11,5mm	Inox303/Stainless st303
014 814 061	M8	14mm	12*1,5mm	11,1-11,5mm	Ac trempé zn blanc/St zn pl
014 814 07	M8	14mm	12*1,5mm	11,1-11,5mm	Inox316/Stainless st316
013 100 03	M10	10mm	14*1,5mm	13,1-13,5mm	Inox303/Stainless st303
013 100 061	M10	10mm	14*1,5mm	13,1-13,5mm	Ac trempé zn blanc/St zn pl
013 100 07	M10	10mm	14*1,5mm	13,1-13,5mm	Inox316/Stainless st316
014 108 061	M10	18mm	14*1,5mm	13,1-13,5mm	Ac trempé zn blanc/St zn pl
014 108 07	M10	18mm	14*1,5mm	13,1-13,5mm	Inox316/Stainless st316
013 122 061	M12	12mm	16*1,75	15,0-15,4mm	Ac trempé zn blanc/St zn pl
014 123 061	M12	22mm	16*1,75	15,0-15,4mm	Ac trempé zn blanc/St zn pl
013 144 061	M14	14mm	18*2,0mm	17,0-17,4mm	Ac trempé zn blanc/St zn pl



Juno Industries
Stoktevijver 22
9930 Lievegem
Belgique
www.junoindustries.fr

Acier trempé & zingué blanc,
contient jusqu'à 0,35% de plomb

Steel zinc plated, contains upto
0,35% led

Tél France: +33-9.75.18.16.09
Tel BeNeLux: +32-9/395.95.90
Adresse mail:
co@junoindustries.fr
co@junoindustries.eu