

B-Lok® SERIES 841 - 842



SELF-LOCKING EXPANSION INSERTS

APPLICATION

Thermosetting materials.

ASSEMBLY

By pressure through expansion anchorage.

SERIES 841

PRODUCT		CODE	Metric thread	External diameter	Total length	Minimum wall thickness	Hole diameter
S**	R***		(d1)	(d2)	(L)	(S)	(d3)
	●	841 0020.80	M 2	3.55	4.0	2.4	3.2 ÷ 3.3
	●	841 0025.80	M 2.5	4.3	4.8	3.2	4.0 ÷ 4.1
●		841 0030.80	M 3	4.3	4.8	3.2	4.0 ÷ 4.1
	●	841 0035.80	M 3.5	5.1	6.4	3.6	4.7 ÷ 4.8
●		841 0040.80	M 4	6	8.0	4.0	5.5 ÷ 5.6
●		841 0050.80	M 5	6.8	9.5	4.8	6.3 ÷ 6.4
●		841 0060.80	M 6	8.4	12.7	6.0	7.9 ÷ 8.0
●		841 0080.80	M 8	9.9	12.7	7.0	9.5 ÷ 9.6

SERIES 842

PRODUCT		CODE	Metric thread	External diameter	Total length	Head diameter	Head thickness	Minimum wall thickness	Hole diameter
S**	R***		(d1)	(d2)	(L1)	(d4)	(L3)	(S)	(d3)
	●	842 0020.80	M 2	3.55	4.0	4.8	0.6	2.4	3.2 ÷ 3.3
	●	842 0025.80	M 2.5	4.3	4.8	5.6	0.6	3.2	4.0 ÷ 4.1
●		842 0030.80	M 3	4.3	4.8	5.6	0.6	3.2	4.0 ÷ 4.1
	●	842 0035.80	M 3.5	5.1	6.4	6.4	0.8	3.6	4.7 ÷ 4.8
●		842 0040.80	M 4	6	8.0	7.2	0.8	4.0	5.5 ÷ 5.6
●		842 0050.80	M 5	6.8	9.5	8.0	1.0	4.8	6.3 ÷ 6.4
●		842 0060.80	M 6	8.4	12.7	9.5	1.3	6.0	7.9 ÷ 8.0
●		842 0080.80	M 8	9.9	12.7	11.0	1.3	7.0	9.5 ÷ 9.6

• MATERIAL

Brass

• FINISHING

Natural

• TOLERANCES

ISO 2768-m

• THREADING d1

ISO 6H

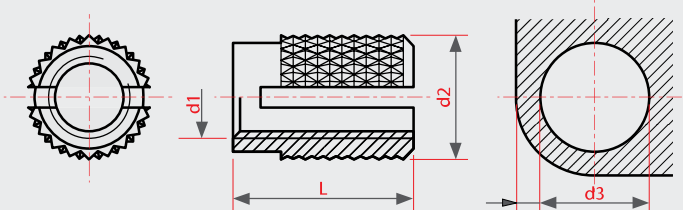
• EXAMPLE OF CODE DESIGNATION

Insert B-Lok® with head, knurled, M 5 thread, brass: **842 0050.80**

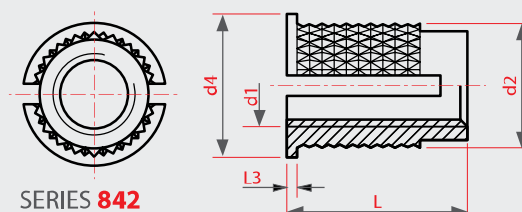
S** standard	R*** on demand
-----------------	-------------------

Non binding dimensions, expressed in mm.

For a correct usage of the product it is advisable to carry out some preliminary assembling tests to determine the correct hole diameter.



SERIES 841



SERIES 842